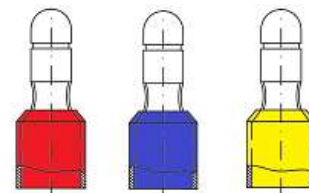
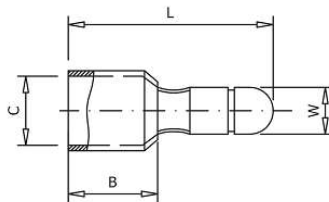


# UKONČOVACIE PRVKY VODIČOV

## KOLÍKY GULĎATÉ S IZOLÁCIOU - PVC

- **materiál:** E-Cu, galvanicky Sn
- **izolácia:** PVC
- **pracovná teplota :** od -10°C do +75°C

- **material :** E-Cu, tin plated
- **insulation:** PVC (vinyl)
- **temperature range:** -10°C to +75°C



Objednáv. kód	Prierez (mm <sup>2</sup> )	C (mm)	W (mm)	L (mm)	B (mm)	Min. balenie (ks)
RF-BM4	0,5 - 1,5	1,7	4,0	21,0	10,0	100
BF-BM4	1,5 - 2,5	2,3	4,0	21,0	10,0	100
BF-BM5		2,3	5,0	21,0	10,0	100
GF-BM5	4,0 - 6,0	3,8	5,0	24,2	10,0	100